



Good Shepherd Newsletter

Friday 23rd January 2026

Learning together as part of God's family

Talent Show

Please come and watch our talent show on Tuesday at 2pm in the hall.

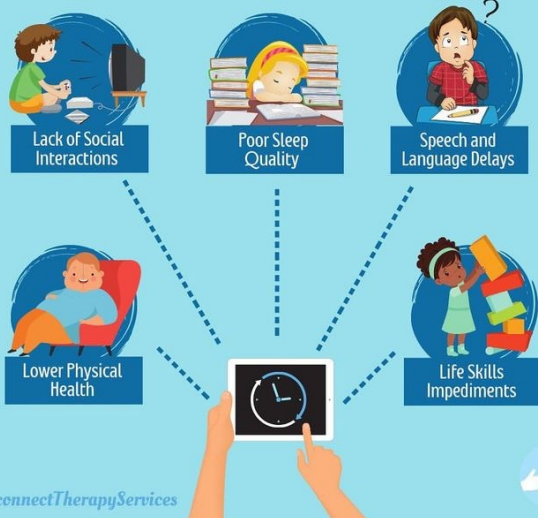


Mrs Downing's SEND Bulletin

For children with additional needs, reducing their screen time is crucial for their well-being and learning. Too much screen time has been associated with declining working memory, processing difficulties, attention levels and language levels. Children with SEN are already vulnerable.

Please try to limit children to under 2 hours a day (screen time includes time on a phone, tablet, computer or television).

NEGATIVE EFFECTS OF TOO MUCH SCREEN TIME ON CHILDREN



Be kind and respectful

School Disco

There will be a school disco on Wednesday 11th February 3:15-4:15pm. Tickets £2.50 available on ParentPay.

We will also be offering a special 'quiet' disco for those children who find the main disco too loud or too busy.



Childcare

Do you need regular or occasional childcare? Does your child enjoy playing games and sports?

Wraparound care at Good Shepherd is provided by Active Future, details can be found at the school office.

Tram Disruption

There will be a partial closure of the trams network Wednesday 11th February and Wednesday 25th February.

No trams will operate between East Croydon and New Addington. Replacement bus services will operate between East Croydon and New Addington every 10-15 minutes stopping at all tram stops.



Respect

Responsibility

Determination

Positivity

Teamwork

Headteacher and Kindness Awards

Well done to the following children who have worked hard, had great behaviour or have shown great kindness and thoughtfulness to others:

	Headteacher Award:	Kindness Award:
R:	Iyosayi	Dior-Rose
Y1:	Joshua	Abigail
Y2:	Julia	Devarsh
Y3:	Israel	Nana
Y4:	Ola	Gabriella
Y5:	Y5	Y5
Y6:	Ronelle	Kezia



Friends of Good Shepherd (FROGS)



FROGS Coffee morning/afternoon

Our next meeting is on Tuesday 10th February at 8.40am and 2.30pm in the hub.

Mother's Day stall -Thursday 12th March and Friday 13th March.

We are now accepting donations for our stall. If you have unopened or unwanted gifts for women in good condition such as toiletries, perfume, books, stationery etc. that we can re-use as gifts for our stall, please donate them to us.

All donations should be given to the school office.

Breakfast Club

Breakfast Club changes after half term - more information next week.

Reminder

School closes for half term on Thursday 12th February at 3:15pm and reopens on Monday 23rd February at 8:40am.

Attendance

Our winning class this week is Year 4 with 98% attendance - well done and keep it up!



Children's Mental Health Week

Children's Mental Health Week will be start on February 9th. The theme this year is "This is My Place", focusing on the importance of belonging, connection, and creating supportive environments for young people.

Our non-uniform day will now be on Wednesday 11th February and not Thursday 12th February as previously advertised—this is so it is the same day as our disco.

Fr Con's Reflection



The Conversion of Paul, formerly Saul of Tarsus (persecutor of Christians), is January 25th- but this year, it loses out to the Sunday.

St. Paul in the 2nd of his 2 Letters to his disciple Timothy, writes: "ALL SCRIPTURE IS BREATHED OUT BY GOD AND PROFITABLE FOR TEACHING, FOR REPROOF, FOR CORRECTION, AND FOR TRAINING IN RIGHTEOUSNESS." (2 TIM 3:16).

The circumstances leading to his conversion were dramatic. On his way to Damascus, intent on rounding up Christians for persecution, he was struck by a blinding light and Jesus' voice from Heaven.

May Paul's words above always show the bright light of God's Word in the sphere of Education.

If you need to contact the office, please email or telephone **01689 841 771**
office@goodshepherd.croydon.sch.uk

Have a lovely weekend
Mrs Day